



ownCloud User Manual

Release 5.0

The ownCloud developers

October 30, 2013

CONTENTS

1	User Documentation	1
1.1	Webinterface	1
1.2	Files & Synchronization	1
1.3	Contacts & Calendar	2
1.4	Bookmarks	2
1.5	Mediaplayer	2
1.6	Backup	2
1.7	Indices and tables	2
2	The ownCloud Web Interface	3
2.1	Overview	3
3	Files & Synchronization	5
3.1	Accessing your Files (WebDav)	5
3.2	Version Control	12
3.3	Deleted Files	13
3.4	Desktop Synchronisation	13
3.5	Files Encryption	13
4	Contacts & Calendar	15
4.1	Using the Contacts App	15
4.2	Using the Calendar App	20
4.3	iOS - Synchronize iPhone/iPad	22
4.4	Synchronizing with OS X	24
4.5	Thunderbird - Synchronize Address Book	24
4.6	Synchronizing with KDE SC	26
4.7	Troubleshooting	29
5	Using the Bookmarks App	31
5.1	The main interface	31
5.2	The bookmarklet	32
6	Native Media Player Support	33
7	User Account Migration	35
7.1	Export	35
7.2	Import	35
8	Indices and tables	37

USER DOCUMENTATION

Welcome to ownCloud, your self-hosted file sync and share solution.

OwnCloud is open source file sync and share software for everyone from individuals operating the free Community Edition, to large enterprises and service providers operating ownCloud Enterprise Edition. ownCloud provides a safe, secure and compliant file sync and share solution on servers you control.

With ownCloud you can share one or more folders on your PC, and sync them with your ownCloud server. Place files in your local shared directories, and those files are immediately synced to the server, and then to other PCs via the desktop client. Not near a desktop client? No problem, simply log in with the web client and manage your files there. The Android and iOS mobile apps allow you to browse, download and upload photos and videos. On Android, you may also create, download, edit and upload any other files, with the correct software installed.

Whether using a mobile device, a workstation, or a web client, ownCloud provides the ability to put the right files in the right hands at the right time on any device in one simple-to-use, secure, private and controlled solution. After all, with ownCloud, it's Your Cloud, Your Data, Your Way.

1.1 Webinterface

This chapter contains a general overview how you access ownCloud from a Browser like Firefox, Chrome or Internet Explorer

- *The ownCloud Web Interface*

1.2 Files & Synchronization

This chapter contains information about accessing your files via WebDav and Synchronization.

- *Accessing your Files (WebDav)*
- *Desktop Synchronisation*
- *Version Control*
- *Deleted Files*
- *Files Encryption*
- `files/configuring_big_file_upload`

1.3 Contacts & Calendar

Contacts & Calendar web interface, export, import and synchronization.

- *Using the Calendar App*
- *Using the Contacts App*
- *iOS - Synchronize iPhone/iPad*
- *Synchronizing with KDE SC*
- *Synchronizing with OS X*

1.4 Bookmarks

Web interface for managing your bookmarks.

- *Using the Bookmarks App*

1.5 Mediaplayer

Web interface for playing music in your browser.

- *Native Media Player Support*

1.6 Backup

Import and export your user account settings.

- *User Account Migration*

1.7 Indices and tables

- *genindex*

THE OWNCLOUD WEB INTERFACE

You can connect to ownCloud with your web browser by pointing it to the address that you have received from your service provider. In case you are administering the server yourself, have a look at ownCloud Administrators Manual.

When you enter the URL, you will receive a page that is similar to the one depicted below:

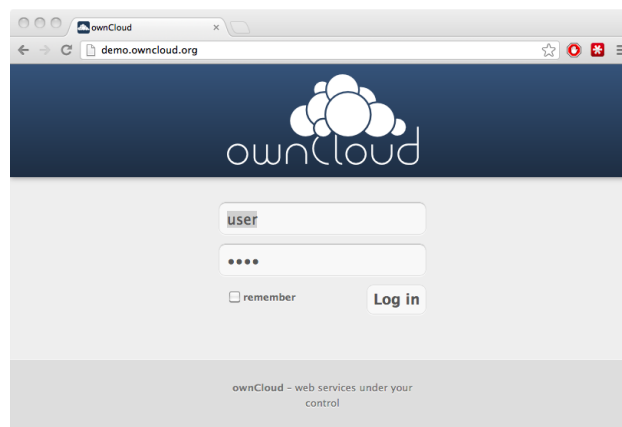


Figure 2.1: The ownCloud login screen

Login with the user name and password with you have received from your service provider. If you have set up the server yourself, log in with the user name which you have created during the setup process. You can add further users through the settings, or by hooking up a user backend, such as LDAP.

2.1 Overview

After clicking the *Log in* button, you will be redirected to ownCloud's main web interface:

The web interface comprises of the following items:

1. **Navigation bar:** Allows navigation between different parts of ownCloud, provided by apps. Not all apps depicted in this screen shot are installed and enabled by default.
2. **Application view:** This is where apps show their content. By default, this will show the files and directory (file view) of your user on the ownCloud installation.
3. **Upload/Create button:** This allows you to create new files or upload existing ones from your device. Note that you can also drop files from Explorer or Finder onto the ownCloud file view and they will get uploaded to ownCloud.

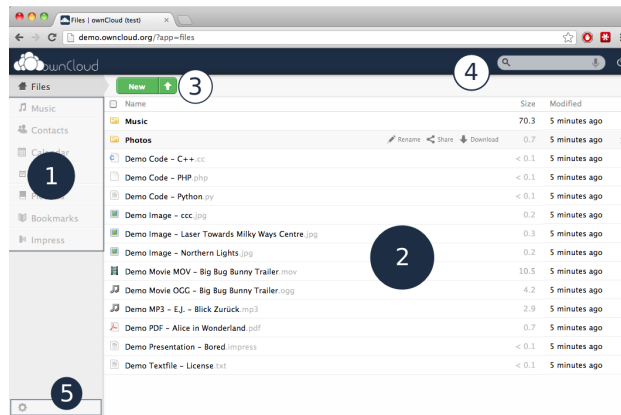


Figure 2.2: The ownCloud main interface with the essential elements numbered

4. **Search/Logout:** Search allows you to look for files and directories. Currently, ownCloud does not provide a full text search, but this may change in future releases.
5. **Settings:** This button provides access to the settings menu, where you can change your personal settings, such as the interface language or your password. You can also retrieve the WebDAV URL (see next chapter) and show your quota. Administrators will also get access to user management (*Users*), the apps settings (*Apps*) and administrative settings (*Admin*) including access to ownCloud's log.

FILES & SYNCHRONIZATION

3.1 Accessing your Files (WebDav)

Your ownCloud instance can be accessed on every platform via the web interface. There are also options to integrate it with your desktop.

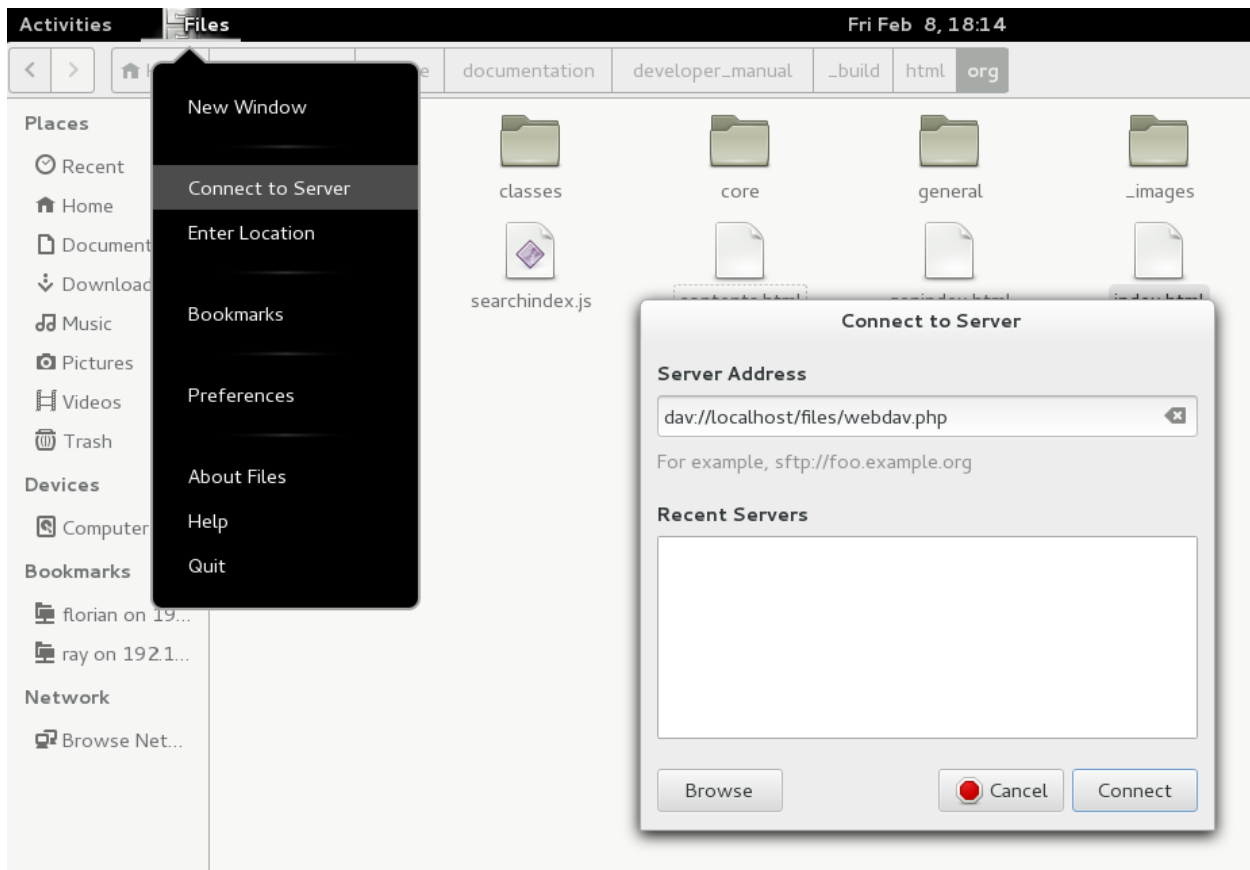
Note: You will have to adjust **youraddress.com/** to the URL of your ownCloud server installation

3.1.1 Linux

Gnome 3/Nautilus

The URL that you have to use to connect to the owncloud installation in nautilus is:

`davs://youraddress.com/owncloud/remote.php/webdav`

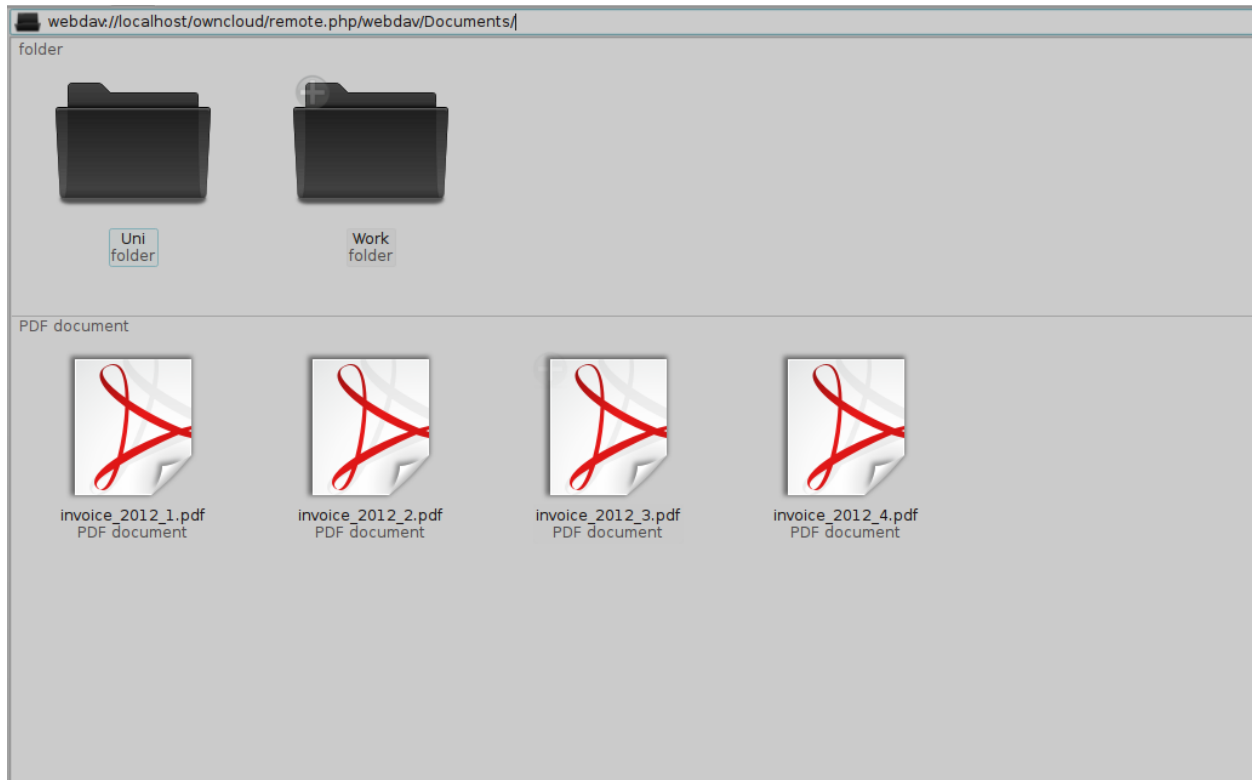


If your server connection is not HTTPS-secured, use *dav://* instead of *davs://* .

KDE/Dolphin

Click in the adress area and enter:

```
webdav://youraddress.com/owncloud/remote.php/webdav
```



or:

1. Open Dolphin and click on where it says Network in the left hand Places column.
2. Click on the icon labeled **Add a Network Folder**.
3. It should come up with WebDAV already selected. Make sure it is and then click **Next**.
4. Enter the following settings:
 - Name: The name you'll see in the **Places** bookmark, for example ownCloud
 - User: Your ownCloud username you use to log in, for example admin
 - Server: Your ownCloud domain name, for example **youraddress.com** (without **http://** before or directories afterwards).
 - Folder: Enter:


```
owncloud/remote.php/webdav
```
5. Create icon checkbox: Tick to get a bookmark in the Places column
6. Port & Encrypted checkbox: Leave as it is unless you have special settings or an SSL certificate.

Mounting from command line

1. Install the WebDAV support using the davfs package. On Debian/Ubuntu, you can use:


```
sudo apt-get install davfs2
```
2. Reconfigure davfs2 to allow access to normal users (select Yes when prompted):

```
sudo dpkg-reconfigure davfs2
```

3. Add the users you want to be able to mount the share to the davfs2 group:

```
sudo usermod -aG davfs2 <user>
```

4. Edit `/etc/fstab` and add the following line for each user who wants to mount the folder (with your details where appropriate):

```
youraddress.com/owncloud/remote.php/webdav /home/<username>/owncloud davfs user,rw,noauto 0 0
```

Then, as each user who wants to mount the folder:

1. Create the folders **owncloud/** and **.davfs2/** in your home directory
2. Create the file `secrets` inside **.davfs2/**, fill it with the following (with your credentials where appropriate):

```
youraddress.com/owncloud/remote.php/webdav <username> <password>
```

3. Ensure the file is only writable by you either through the file manager, or via:

```
chmod 600 ~/.davfs2/secrets
```

4. Run the command:

```
mount ~/owncloud
```

5. To automatically mount the folder on login, add the command you used in step 4 to `./ .bashrc`

Known Issues

Problem: Resource temporarily unavailable

Solution: If you experience trouble when you create a file in the directory, edit `/etc/davfs2/davfs2.conf` and add:

```
use_locks 0
```

Problem: Certificate warnings

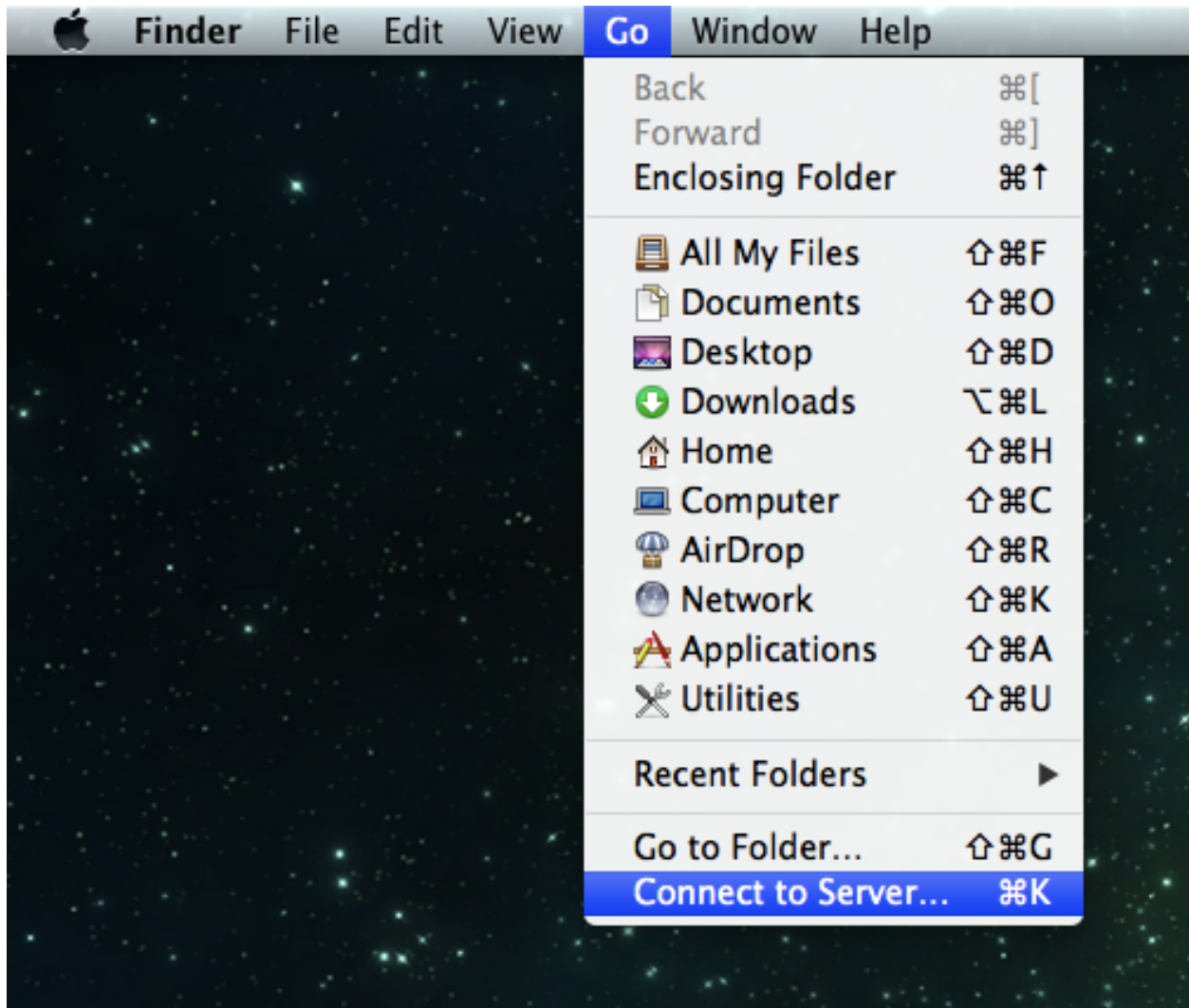
Solution: If you use a self-signed certificate, you will get a warning. If you are willing to take the risk of a man in the middle attack, run this command instead:

```
echo "y" | mount ~/owncloud > /dev/null 2>&1
```

3.1.2 MacOS

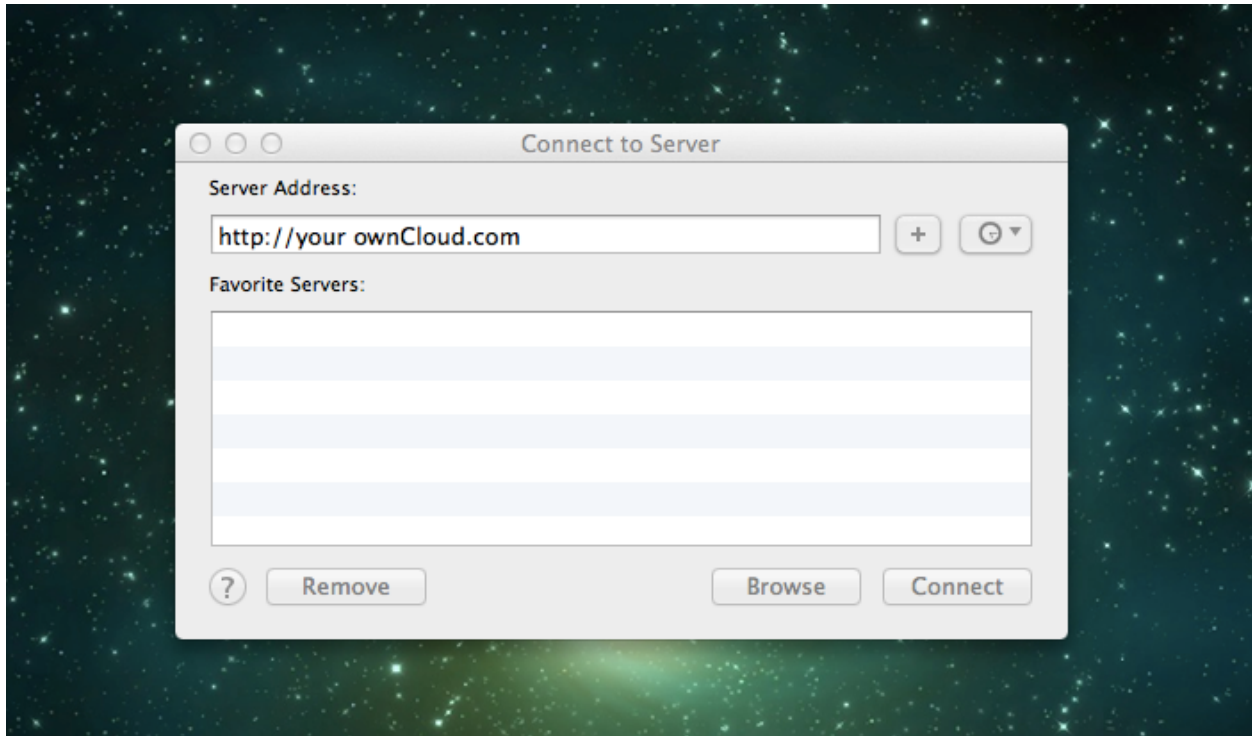
Note: Finder suffers from a [series of implementation problems](#) and should only be used if the ownCloud server runs on **Apache** and **mod_php**

In the Finder, choose **Go > Connect to Server**, type the address of the server in the **Server Address** field, and click **Connect**.



The URL that you have to use to connect to the owncloud installation in finder is:

`http://youraddress.com/owncloud/remote.php/webdav`



For details, check the respective [vendor documentation](#) at the Apple website.

3.1.3 Windows

For Windows a separate webdav client is recommended to access the files from your server. Choose one from the [WebDav Project](#) page

Should you have to use the native implementation then you can assign ownCloud a drive letter. This allows you to browse files stored on an ownCloudserver the way you would files stored in a mapped network drive.

Using this feature requires network connectivity. If you want to store your files offline, use the ownCloud Client to sync all files on your ownCloud to one or more directories of your local hard drive.

Note: Prior to mapping your drive, you will need to permit the use of Basic Authentication in the Windows Registry. The procedure is documented in [KB841215](#) and differs between Windows XP/Server 2003 and Windows Vista/7. Please follow the Knowledge Base article before proceeding, and follow the Vista instructions if you run Windows 7.

Mapping via the command line

Suppose your ownCloud is installed at **<https://youraddress.com/owncloud>**, that is, entering this URL in your web-browser will bring up the login screen. Running:

```
net use Z: https://youraddress.com/owncloud/remote.php/webdav /user:youruser yourpassword
```

will map the files of your ownCloud account to the drive letter Z:. An alternative syntax is:

```
net use Z: \\youraddress.com@ssl\owncloud\remote.php\webdav /user:youruser yourpassword
```

Appending **/persistent** makes the connection persistent across reboots.

You can also mount your ownCloud via HTTP, leaving the connection unencrypted. Use either of the following syntaxes:

```
net use Z: http://youraddress.com/owncloud/remote.php/webdav /user:youruser yourpassword
net use Z: \\youraddress.com\owncloud\remote.php\webdav /user:youruser yourpassword
```

Please note that this allows anyone to sniff your ownCloud data with ease, especially on public WiFi hotspots. Plain HTTP should therefore only be used in conjunction with a VPN tunnel when used on Laptops.

Using Windows Explorer

Right-click on **Computer** entry and select **Map network drive....** Choose a local network drive to map ownCloud to. Finally, enter the address to your ownCloud instance, followed by **/remote.php/webdav**, e.g.

`https://youraddress.com/owncloud/remote.php/webdav`

for an SSL protected server. Check **Reconnect at logon** to make this mapping persistent across reboots. If you want to connect as another user, check **Connect using different credentials**.

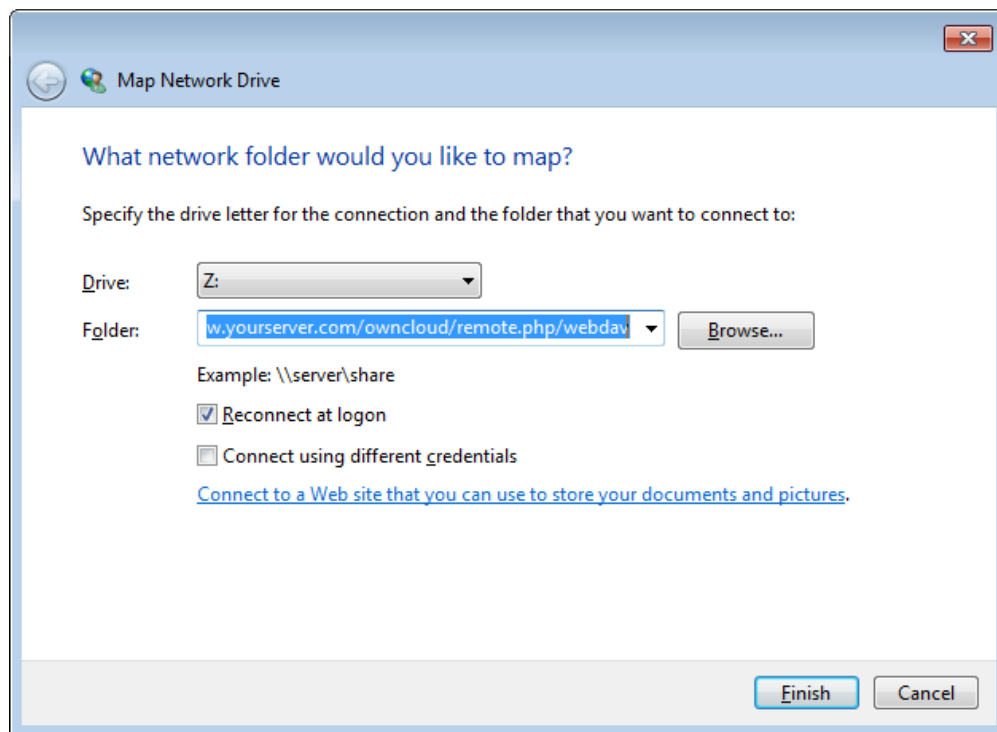


Figure 3.1: Mapping WebDAV on Windows Explorer.

After pressing **Finish**, Windows Explorer will map the network drive and your ownCloud instance should be available

Using Cyberduck (4.2.1)

Specify a server without any leading protocol information. e.g.:

Server youraddress.com

The port depends on whether your ownCloud server supports SSL or not. Cyberduck requires that you select a different connection type depending on whether SSL is to be used ('WebDAV' or 'WebDAV (HTTPS/SSL)'):

Port 80 (for WebDAV) 443 (for WebDAV (HTTPS/SSL))

Use the 'More Options' drop-down menu to add the rest of your webdav URL into the 'Path' field. e.g.:

Path remote.php/webdav

Known Problems

Problem Windows refuses to connect via HTTPS

Solution The Windows WebDAV Client does not support Server Name Indication (SNI) on encrypted connections. If you encounter an error mounting an SSL-encrypted ownCloud instance, please contact your provider about assigning a dedicated IP address for your SSL-based server.

Problem I receive the error **Error 0x800700DF: The file size exceeds the limit allowed and cannot be saved.**

Solution Windows limits the maximum size a file transferred from or to a WebDAV share may have. You can increase the value **FileSizeLimitInBytes** in **HKEY_LOCAL_MACHINESYSTEMCurrentControlSetServicesWebClientParameters**. by clicking on **Modify**. In order to increase the limit to the maximum value of 4GB, pick **Decimal** and enter **4294967295** as value. Afterwards, reboot Windows or restart the **WebClient** service.

Todo

document registry keys on file size limit and not complaining in no network cases

3.1.4 Sync Client

However, some applications only allow you to save to a local folder. To get around this issue, you can use the *ownCloud sync clients*

3.1.5 Mobile

To connect to your ownCloud server with the **ownCloud** mobile apps, use the base URL and folder only:

`youraddress.com/owncloud`

No need to add remote.php/webdav as you do for any other WebDAV client.

There are apps in development for both [Android](#) and [webOS](#). Feel free to contribute, if you can! Right now you can use other apps to connect to ownCloud from your phone via WebDAV. [WebDAV Navigator](#) is a good (proprietary) app for [Android App](#) , [iPhone](#) & [BlackBerry](#).

The URL for these is:

`youraddress.com/owncloud/remote.php/webdav`

3.2 Version Control

ownCloud supports simple version control for files. Versioning is enabled by default, and creates backups of files which are accessible via the history tab. This tab also links to the history page, where you can roll back a file to any previous version. Changes made at intervals greater than two minutes are saved in data/[user]/versions, and made accessible using the above pages.

The versioning app expires old versions automatically to make sure that the user doesn't run out of space. Following pattern is used to delete old versions:

- For the first 10 seconds ownCloud keeps one version every 2 seconds
- For the first hour ownCloud keeps one version every minute
- For the first 24 hours ownCloud keeps one version every hour
- For the first 30 days ownCloud keeps one version every day
- After the first 30 days ownCloud keeps one version every week

The versions are adjusted along this pattern every time a new version gets created.

Beside that the version app takes care to never use more than 50% of the users currently available free space. If the stored versions exceed this limit ownCloud delete the oldest versions until it meets the memory usage limit again.

3.3 Deleted Files

ownCloud keeps a copy of your deleted files in case you need them again. To make sure that the user doesn't run out of memory the deleted files app manages the size of the deleted files for the user. The app takes care to never use more than 50% of your currently available free space. If your deleted files exceed this limit ownCloud deletes the oldest versions until it meets the memory usage limit again.

Beside that ownCloud checks the age of the files every time a new files gets moved to the deleted files. By default deleted files stay in the trash bin for 180 days. The Administrator can adjust this value in the config.php by setting the `trashbin_retention_obligation` value. Files older than the `trashbin_retention_obligation` will be deleted permanently. Additionally ownCloud calculates the maximum available space every time a new file was added. If the deleted files exceed the new maximum available space ownCloud will expire old deleted files until we meet the limit again.

3.4 Desktop Synchronisation

For synchronizing files with your desktop computer, we recommend using the [ownCloud Client](#) for Windows, Mac OS X and Linux.

The ownCloud Desktop Client enables you to connect to your private ownCloud Server. You can create folders in your home directory, and keep the contents of those folders synced with your ownCloud server. Simply copy a file into the directory and the ownCloud desktop client does the rest. Make a change to the files on one computer, it will flow across the others using these desktop sync clients. Always have your latest files with you wherever you are.

Its usage is documented separately in the [ownCloud Desktop Client Manual](#).

Furthermore, It is possible to synchronize your ownCloud calendar and address book with a variety of different operating systems and devices. It is also possible to mount your ownCloud storage via WebDAV, which is also documented in the next chapters.

3.5 Files Encryption

ownCloud ships a encryption app, which allows to encrypt all files stored in your ownCloud. Once the encryption app was enabled by the admin all your files will be encrypted automatically. Encryption and decryption always happens server-side. This enables the user to continue to use all the other apps to view and edit his data. But this also means that

the server administrator could intercept your data. Server-Side encryption is especially interesting if you use external storages. This way you can make sure that the storage provider is not able to read your data.

Please remember. Once the encryption app is enabled you need your log-in password to decrypt and access your data. By default your data will be lost if you loss your log-in pasword. If you want to protect yourself against password loss store your log-in password on a secure place or enable the recovery key as described below.

3.5.1 What gets encrypted

The current version encrypts all your files stored in ownCloud.

At the moment we don't encrypt:

- old versions (versions created before the encryption app was enabled)
- old files in the trash bin (files which were deleted before the encryption app was enabled)
- image thumbnails from the gallery app
- search index from the full text search app

All this data is stored directly on your ownCloud server, so you don't have to worry to expose your data to a third party storage provider.

3.5.2 Decrypt your data again

Currently there is no way to decrypt your files directly on the server if you decide to stop using the encryption app. The only way to get a complete copy of your unencrypted data is to download/sync all files as long as the encryption app is enabled. After the encryption app was disabled you can upload your unencrypted data again.

It is already planned to add a option to switch from encrypted to unencrypted files directly on the server.

3.5.3 Settings

Once the encryption app is enabled you will find some additional settings on your personal settings page.

Recovery Key

If the admin enabled the recovery-key you can decide by your own if you want to use this feature for your account. If you enable "Password recovery" the admin will be able to read your data with a special password. This allows him to recover your files in case of password loss. If the recovery-key is not enabled than there is no way to restore your files if you loss your log-in password.

Change Private Key Password

This option will be only available if your log-in password but not your encryption password was changed by your admin. This can happen if your ownCloud provider uses a external user back-end, e.g. LDAP, and changed your log-in password there. In this case you can set your encryption password to your new log-in password by providing your old and new log-in password. The encryption app only works if log-in password and encryption password is identical.

CONTACTS & CALENDAR

4.1 Using the Contacts App

The contacts app of ownCloud is like any other mobile contact app but with more functionality. Just as you open your account you will get the a default addressbook available. We will see later that Of course you can always add and remove addressbooks in here.

4.1.1 Adding contacts

There are two ways in which you can add contacts

1. Add them manually
2. Import a VCF file

Importing

So first we'll check out how to import all the VCF files as they are a lot more faster way of creating contacts. Just below the contact list, 3 buttons: The middle one let you upload files.

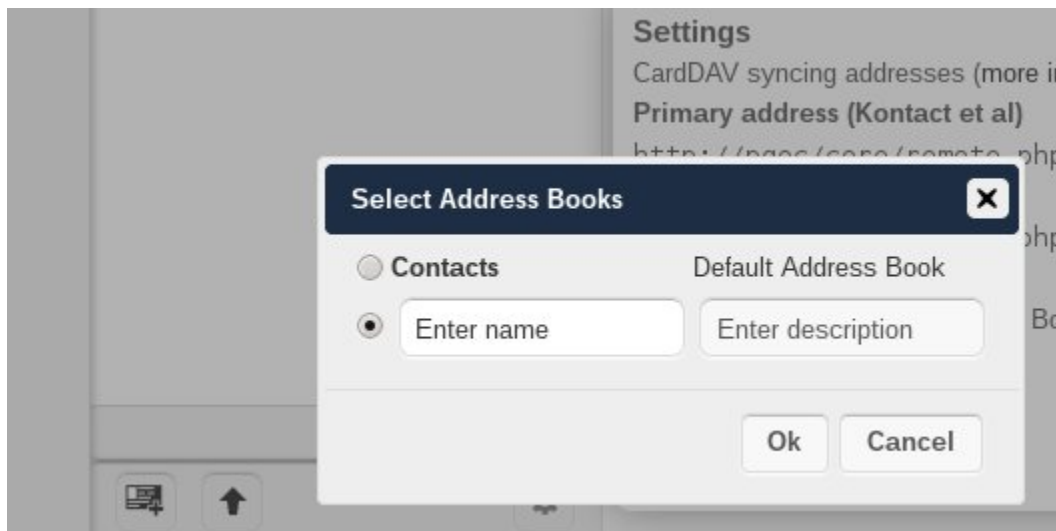


Once you've clicked it, the upload window let you choose your files. We can upload the files one by one or upload all of them at one go.

Let me demonstrate. Open the directory in which you store all the files and then do the following Keep pressing CTRL and select the files to upload. After you are done just click on the open button After the upload it should look something like this in which all the names and contacts will be sorted alphabetically



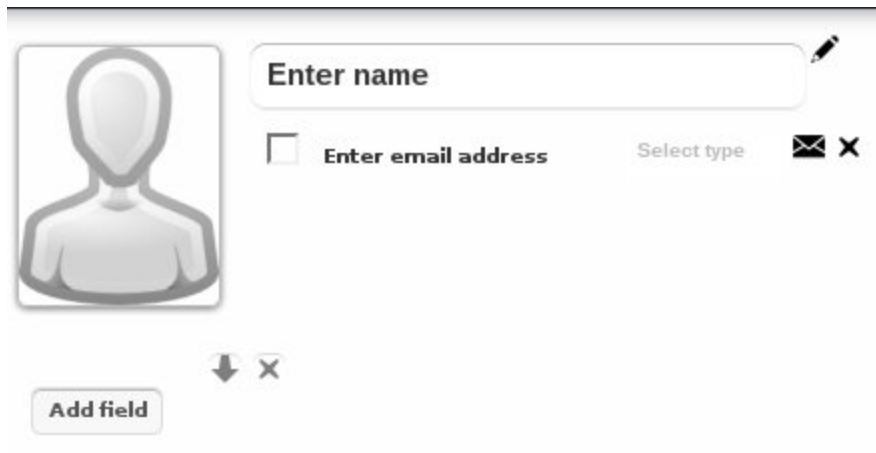
Then, the interface ask you where to put your imported contacts. You have the ability to choose an existing addressbook or to create a new one. Then click on “OK” and that’s all for the import of contacts.



Create contacts manually

In the picture of the bottom bar, you could see the new contact button (first one). Click on it. You can now see an empty contact in the main part of the interface. You have the ability to add all your informations about the contact: the name, the address, the e-mail, the telephone nr, ...

Just click on a field and start typing the information. You can use the “Add Field” button to add another types of information for this contact.



When you want to remove an information of your contact, just click on little delete icon at the right of the field you want to remove.

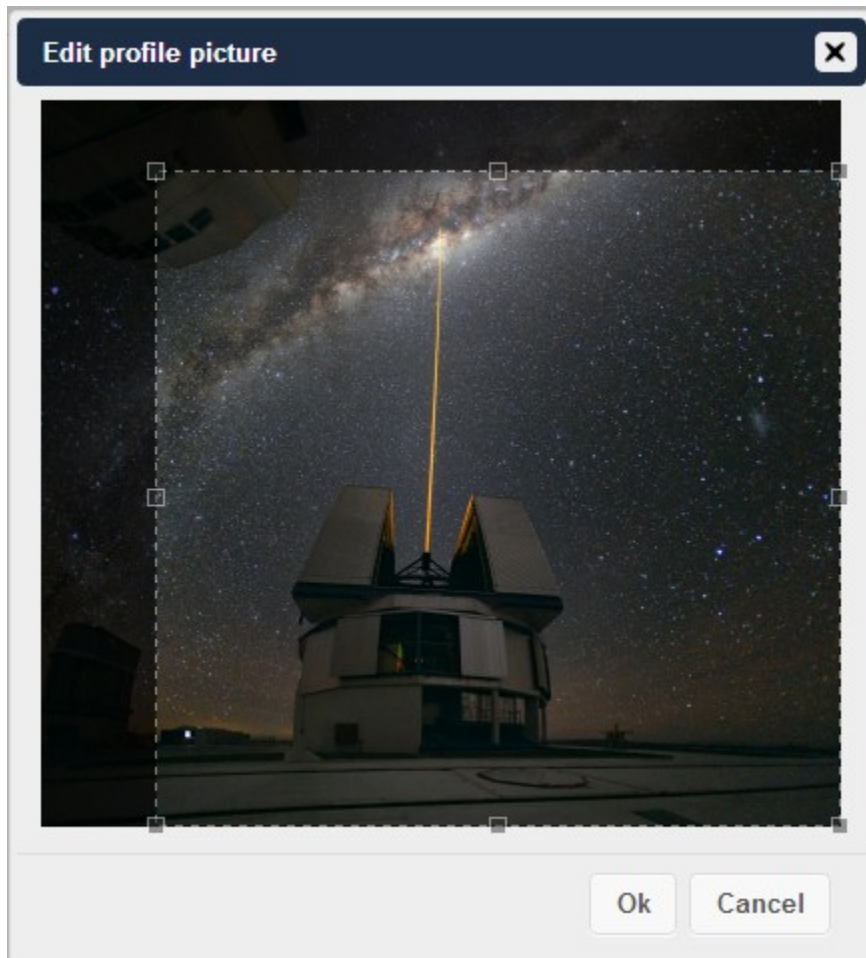
Adding picture to the contact

There are two methods in which you can give a picture id to the specific contact



1. **Direct upload**
2. **Select pics already uploaded in ownCloud files.**

After you have selected the picture for the contact you get an option to crop the picture to suit your requirements

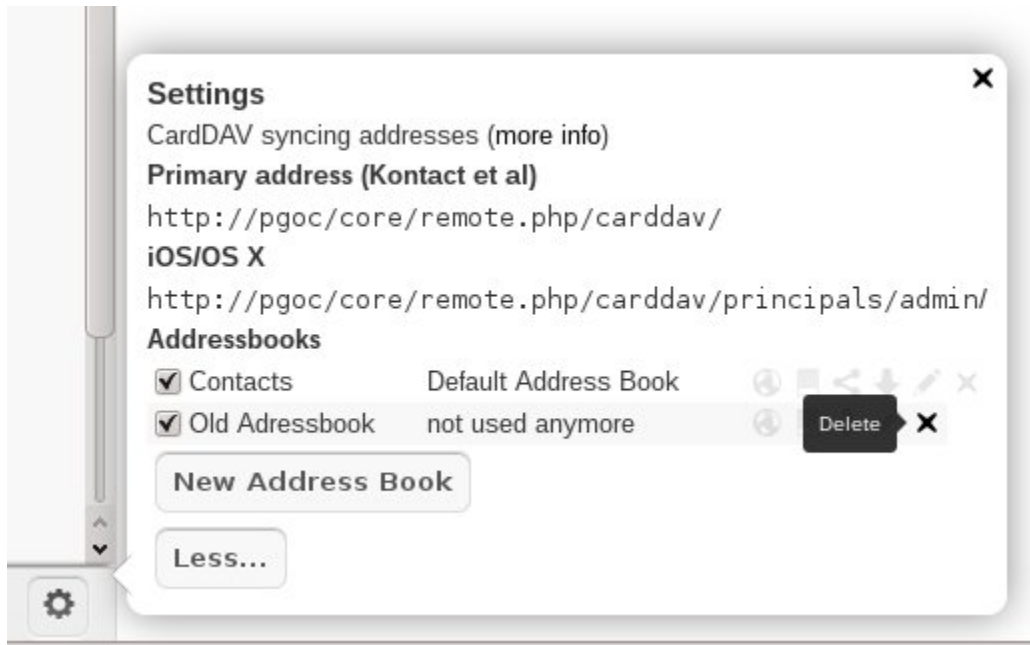


You can crop the picture however you wish and then press OK.

As you can see it is really easy to set things right in this app. It automatically picks up the First name, Middle name (if any) and the last name. You may add or delete any section you want for your own convenience.

4.1.2 Creating new address books

When you click on the third button of the bottom bar, you will have access to the application's settings. Then, press on the "More button" to access the options of your Addressbooks.



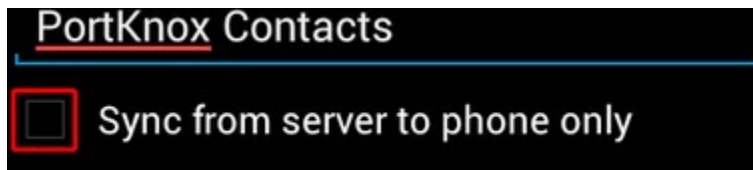
You have there the ability to add, delete, download or share your addressbooks. Hover your cursor on every icon to see what they mean.

4.1.3 Keeping your address book in sync

One of the most important thing in any contact app is to keep it in Sync. You can sync this contact app to your phone which has the following OS's- Android and IOS

Syncing with Android

1. Install cardDav- Sync free from Google play store by visiting this link- <https://play.google.com/store/apps/details?id=org.dmfs.carddav.sync>
2. This app supports auto- configuration which is a Boon- after installing visit this link- [card-davs://owncloud.example.net/remote.php/carddav/](https://owncloud.example.net/remote.php/carddav/) to auto configure the app.
3. Enter your login details
4. After the app has checked your login details you may just select- Sync server to phone option
5. That's it there is nothing else to do for Android :)



Syncing your IOS device

Synchronizing the Address book

1. Open the settings application.

2. Select Mail, Contacts, Calendars.
3. Select Add Account.
4. Select other as account type.
5. Select Add CardDAV account.
6. For server, type <http://owncloud.example.net/remote.php/carddav/principals/username>
7. Enter your user name and password.
8. Select Next.
9. If your server does not support SSL, a warning will be displayed. Select Continue.
10. If the iPhone is unable to verify the account information perform the following:
 - Select OK.
 - Select advanced settings.
 - Make sure Use SSL is set to OFF.
 - Change port to 80.
 - Go back to account information and hit Save.

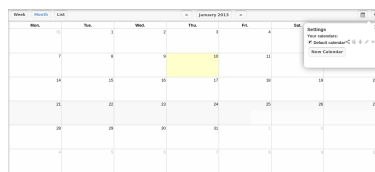
Now should now find your contacts in the address book of your iPhone

Other Syncing options provided by ownCloud

1. For android you may use their official android app- <https://owncloud.com/overview/mobileapps>
2. And for IOS(Iphone and Ipad) use their app - <https://owncloud.com/overview/mobileapps>

4.2 Using the Calendar App

4.2.1 Creating a calendar



If you use the calendar the first time, there will be already a calendar called “Default calendar”. You can manage your calendars with a click on the “Calendar” button in the top right corner. In the dialog, which will appear, you can add, edit, export, enable, disable and delete your calendars. There will be also a link for CalDav access.

4.2.2 Synchronising Calendars with CalDav

Assuming you access your web interface via an address like this:

`http://ADDRESS`

Then you can access your calendars with CalDAV-compatible programs like Kontact, Evolution, Thunderbird using the following URL:

`http://ADDRESS/remote.php/caldav`

To use the ownCloud calendar with Apple iCal you will need to use the following URL, including the trailing slash:

`http://ADDRESS/remote.php/caldav/principals/username/`

Mozilla Lightning users need to this URL scheme:

`https://ADDRESS/remote.php/caldav/calendars/USERNAME/CALENDARNAME`

Example for a simple calendar: The "Default calendar" is referred to as "defaultcalendar", and the users' name here is "test".
The full URL (which on the picture can't be seen because of the short edit field) is then::

`https://localhost/owncloud/remote.php/caldav/calendars/test/defaultcalendar`

4.2.3 Creating events

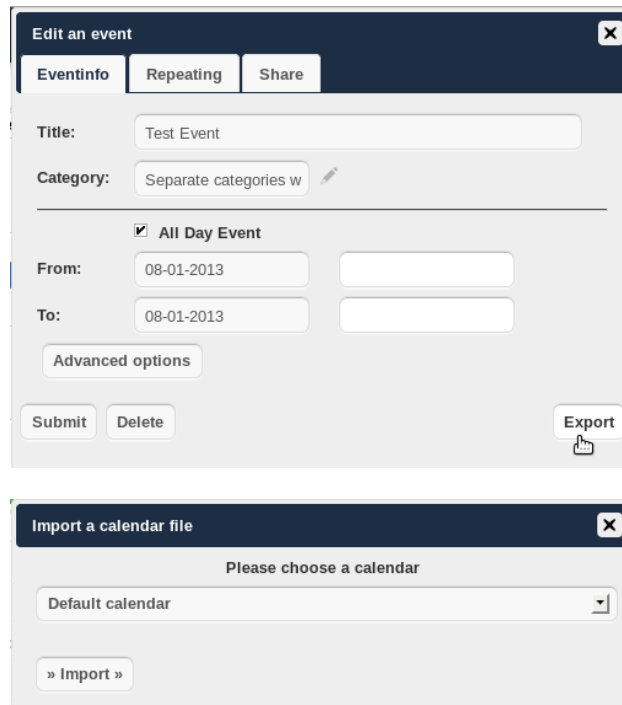
To create an event just click on the date in the month view or choose the timeframe in the weekview. In the dialog which will appear you can enter your information like title, category, etc.

With the advanced options you can set the description, the location and the repetition rate of an event. If the repeating should end you can choose between setting the end by date or by occurrences. If you choose in the weekview all days from Monday to Friday it will automatically set the repeat rule to "every weekday". If the interval of the weekview can be divided by two it automatically set the repeat rule to "Bi-Weekly".

4.2.4 Exporting / Importing events

Export

You can export either a single event or a whole calendar. If you want to export a single event click on it and press the export button in the bottom right corner. If you want to export a whole calendar use the "Calendar" button as described in the chapter "Creating a calendar".

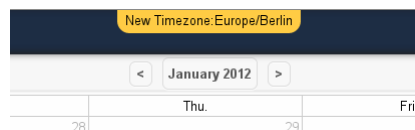


Import

Import your calendar as ical file using the files app. Just click on the calendar file to open the import dialog. You can import the calendar into a new calendar or into an already existing calendar.

Note: If the progressbar does not work properly, the folder `apps/calendar/import_tmp/` has probably no write permission.

4.2.5 Why is the calendar app asking for my current location?



The calendar needs your current position in order to detect your timezone. Without the correct timezone there will be a time offset between the events in ownCloud and your desktop calendar you synchronise with ownCloud. You can also set the timezone manually in the personal settings.

4.3 iOS - Synchronize iPhone/iPad

4.3.1 Calendar

1. Open the settings application.
2. Select Mail, Contacts, Calendars.

3. Select Add Account.
4. Select Other as account type.
5. Select Add CalDAV account.
6. For server, type `ADDRESS/remote.php/caldav/principals/username`
7. Enter your user name and password.
8. Select Next.
9. If your server does not support SSL, a warning will be displayed. Select Continue.
10. If the iPhone is unable to verify the account information perform the following:
 - Select OK.
 - Select advanced settings.
 - Make sure Use SSL is set to OFF.
 - Change port to 80.
 - Go back to account information and hit Save.

Your calendar should now be visible in the Calendar application

4.3.2 Address book

1. Open the settings application.
2. Select Mail, Contacts, Calendars.
3. Select Add Account.
4. Select Other as account type.
5. Select Add CardDAV account.
6. For server, type `ADDRESS/remote.php/carddav/principals/username`
7. Enter your user name and password.
8. Select Next.
9. If your server does not support SSL, a warning will be displayed. Select Continue.
10. If the iPhone is unable to verify the account information perform the following:
 - Select OK.
 - Select advanced settings.
 - Make sure Use SSL is set to OFF.
 - Change port to 80.
 - Go back to account information and hit Save.

Now should now find your contacts in the address book of your iPhone. If it's still not working, have a look at the [Troubleshooting](#) guide.

4.4 Synchronizing with OS X

To use ownCloud with iCal you will need to use the following URL:
<http://ADDRESS/remote.php/caldav/principals/username/>

The setup is basically the same as with iOS using the path **ADDRESS/remote.php/caldav/principals/username/** to sync with ownCloud. For OS X 10.7 Lion and 10.8 Mountain Lion everything works fine, but OS X 10.6 (Snow Leopard) and older needs some fiddling to work. A user contributed the following:

1. Make sure, Addressbook is not running. If it is, select the windows and press Command + Q to terminate it.
2. Navigate to **/Users/YOUR_USERNAME/Library/Application Support/AddressBook/Sources**. If you have all ready some kind of address book setup, it is likely you will see some folders named like this **BEA92826-FBF3-4E53-B5C6-ED7C2B454430**. Note down what folders there are now and leave the window open.
3. Open addressbook and try to add a new CardDav addressbook. At this point, it does not matter what information you enter. It will come up with the same error message you mentioned before when you click “Create”. Ignore it and click “Create” again. A non-functional address book will be added.
4. Close Address-Book again using Command + Q
5. Go back to the folder window from step 2. You will now see a newly created folder with another long string as its name.
6. Navigate to the newly created folder and edit the **Configuration.plist** with your favorite text editor.
7. Search for a section looking like this:

```
<key>servername</key> <string>http://:0(null)</string> <key>username</key> <string>Whatever_you_
```

8. Make it look like this. Please note that the :80 after **YOUR_DOMAIN** is important:

```
<key>servername</key> <string>http://YOUR_DOMAIN:80/owncloud/remote.php/carddav/principals/username</string>
```

9. Save the file and open Address Book again. It will not work yet.
10. Open the preferences for your ownCloud CardDAV-Account and enter your password.
11. You may have to restart Address Book once more. After this, it should work.

If it's still not working, have a look at the [Troubleshooting](#) guide.

There is also an easy [HOWTO](#) in the forum.

4.5 Thunderbird - Synchronize Address Book

4.5.1 Address book

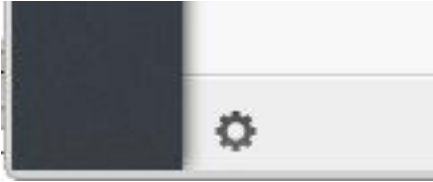
As someone who is new to OwnCloud, New to SoGo Connector, and new to Thunderbird Addressbook... here is what you need in excruciating pithy detail I needed to make this work (for all the other lost souls out there).

1. <http://www.mozilla.org/en-US/thunderbird/> **Thunderbird** for your OS unless it comes with your OS distribution (Linux)
2. <http://www.sogo.nu/english/downloads/frontends.html> **Sogo Connector** (latest release)

With an installed Thunderbird mailtool, and installed SoGo Connector:

1. Thunderbird Addressbook is in the Thunderbird “Tools” Menu
2. In the Thunderbird Addressbook application:

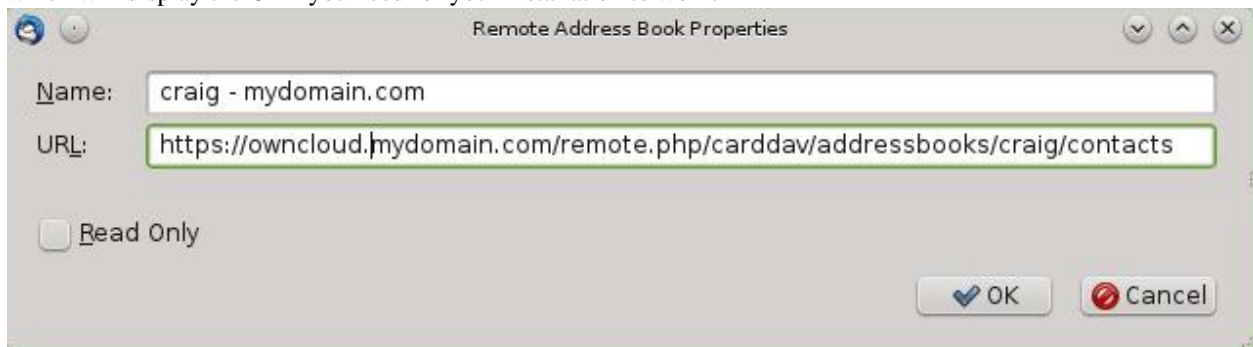
- “File > New > **Remote Addressbook**” (SoGo Connector added this)
- “**Name:**” is the name you want to give your Addressbook in the Thunderbird addressbook bar area
- “**URL:**” is found in your OwnCloud Contacts area, that little Gear symbol



in the -bottom left- of the Contacts View (same symbol as found in the -top right- in the Calendar view). Then look for a little impeller symbol



which will display the URL you need for your installation to work.

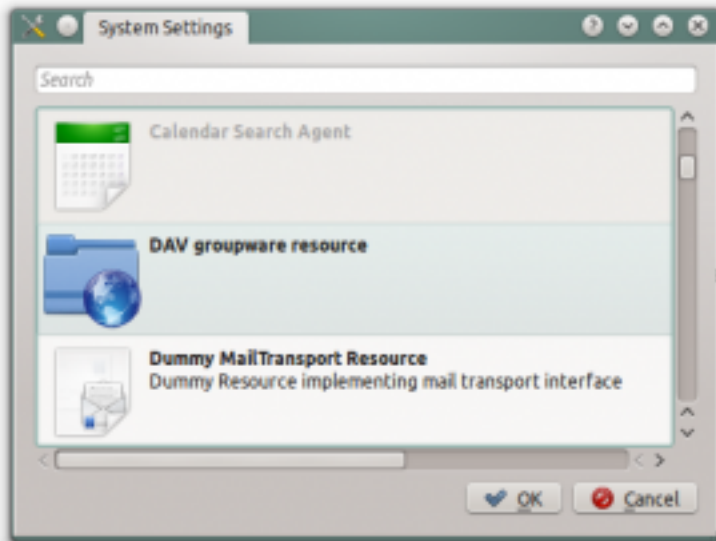


Once installed, synchronize (right click on your newly made remote addressbook and select “Synchronize”). You’ll see your addressbook populate from OwnCloud! Don’t click “read only” above unless you don’t want to modify your OwnCloud server addressbook, like it contains a listing of corporate contacts and is shared with lots of people, and you don’t want a new user dragging it somewhere unintended.

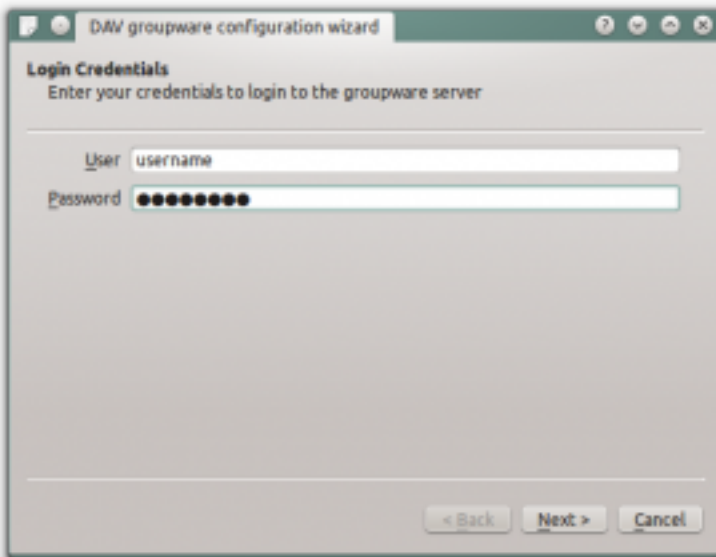
The rest of the details of dealing with Thunderbird addressbook are left to the reader... First thing I learned is dragging a contact to a different addressbook is a “move” operation. If you are worried about losing the contact, save it to a VCF file using OwnCloud (Or LDIF using Thunderbird Addressbook) first! Like dragging from “OwnCloud Addressbook” to “Personal Address Book” removes the contact from OwnCloud Server (*deleting it from all the other synchronized installations*) and puts it in your Local Machine -only- Addressbook. So be careful or you’ll have unintended consequences where you might have intended a “copy” operation.

Contact *Pictures* are also sync’ed!

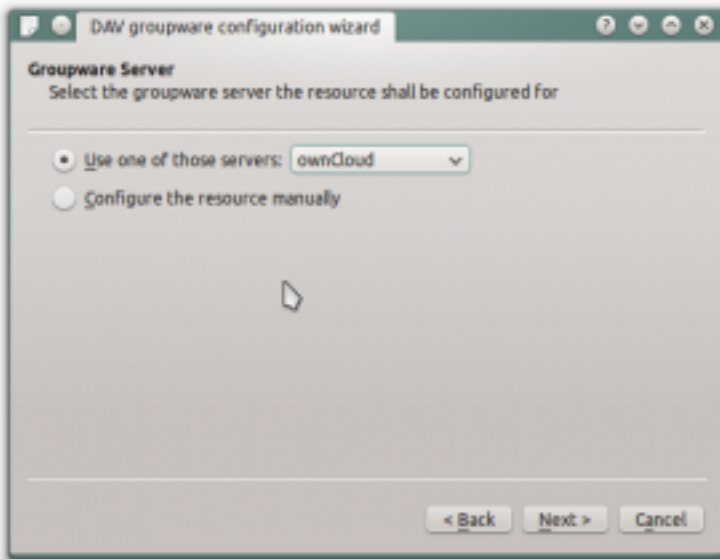
4.6 Synchronizing with KDE SC



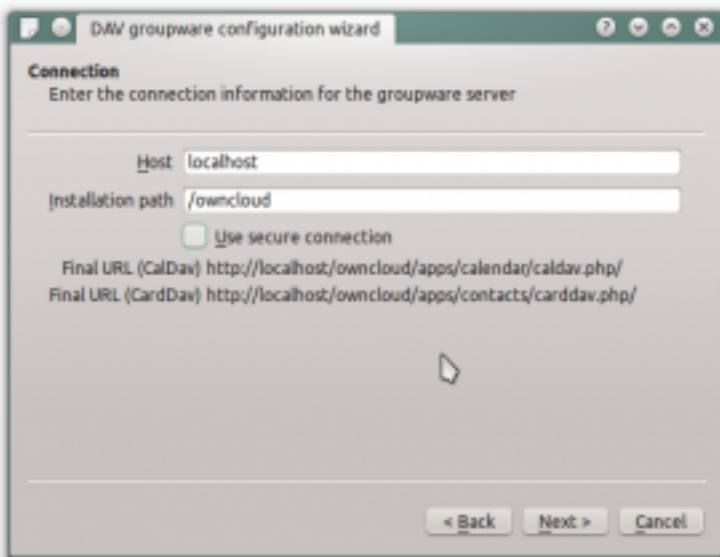
From KDE SC 4.8 and forward setting up ownCloud is very easy. From System Settings Personal Information/Akonadi Resources Configuration select DAV Groupware resource.



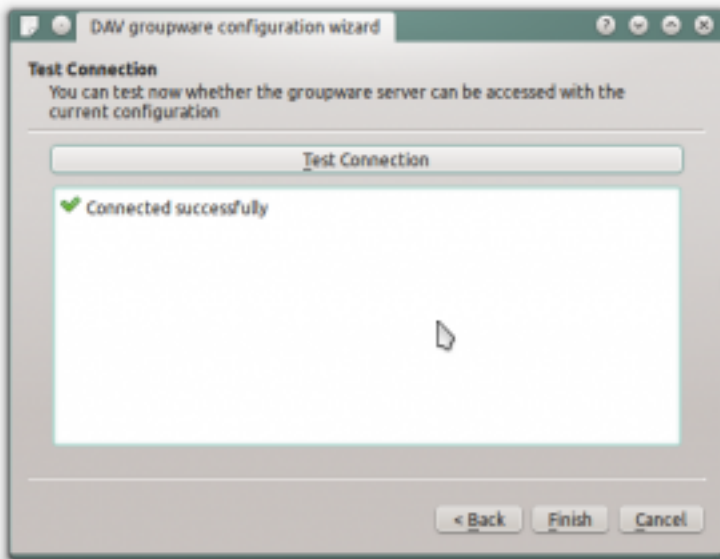
Enter your ownCloud username and password and click “Next”.



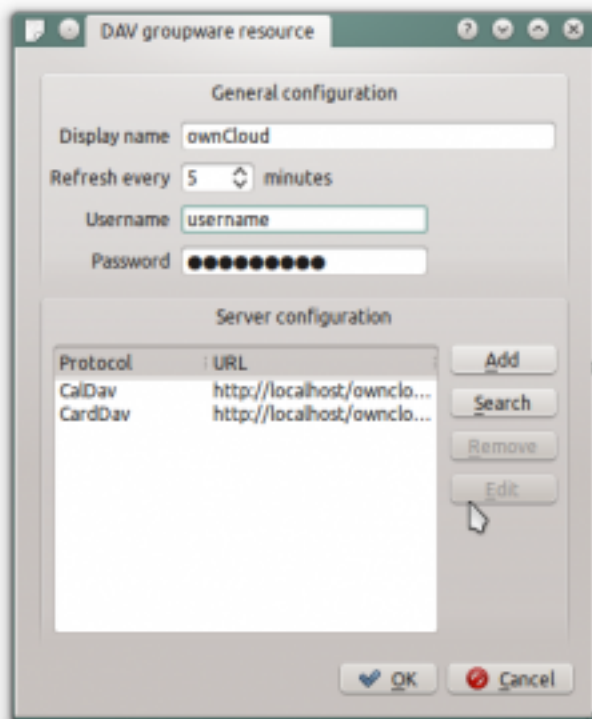
Select ownCloud in the drop down list and click “Next”.



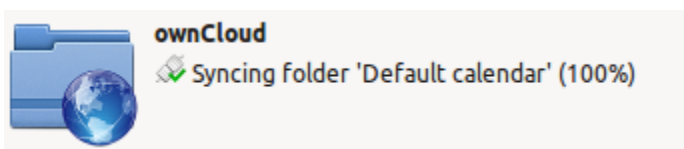
Enter the host name and installation path. If you do not use SSL remember to de-select “Use secure connection”.



Test the connection. If everything went well you should see a message like the one below.

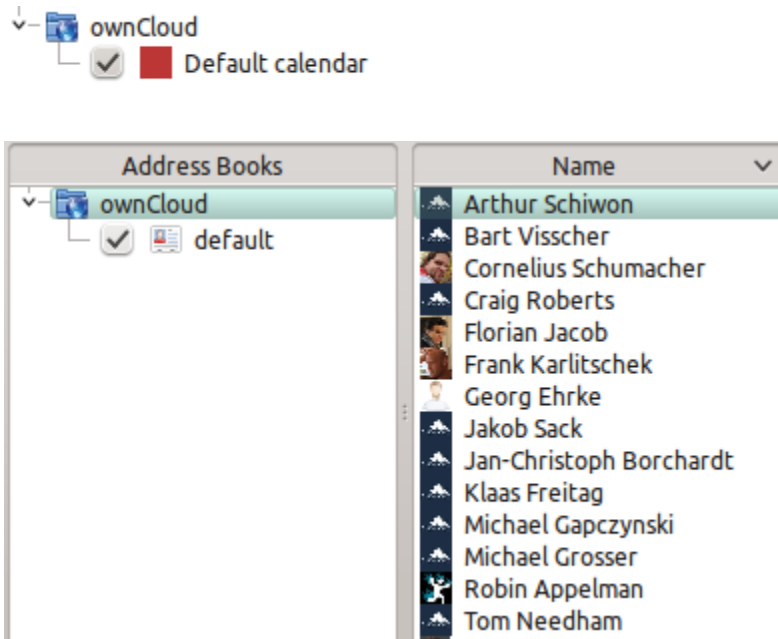


Click "Finish" and you will be able to change the display name and refresh interval.



Now you should see the Akonadi resource doing the first synchronization.

You can find the Contacts and Calendars in Kontact (or KOrganizer/KAddressbook if you run the programs separately.)



4.7 Troubleshooting

4.7.1 Service discovery

Some clients - especially iOS - have problems finding the proper sync URL, even when explicitly configured to use it.

There are several techniques to remedy this, which are described extensively at the [Sabre DAV website](#).

Below is what have proven to work with iOS including iOS 7.

If your ownCloud instance is installed in a sub-folder under the web servers document root, and the client has difficulties finding the Cal- or CardDAV end-points, configure your web server to redirect from a “well-know” URL to the one used by ownCloud. When using the Apache web server this is easily achieved using a `.htaccess` file in the document root of your site.

Say your instance is located in the `owncloud` folder, so the URL to it is `ADDRESS/owncloud`, create or edit the `.htaccess` file and add the following lines:

```
Redirect 301 /.well-known/carddav /owncloud/remote.php/carddav
Redirect 301 /.well-known/caldav /owncloud/remote.php/caldav
```

If you use Nginx as web server, the setting looks something like:

```
url.redirect = (
    "^/.well-known/carddav" => "/owncloud/remote.php/carddav",
    "^/.well-known/caldav" => "/owncloud/remote.php/caldav",
)
```

Now change the URL in the client settings to just use `ADDRESS` instead of e.g. `ADDRESS/remote.php/carddav/principals/username`.

This problem is being discussed in the [forum](#).

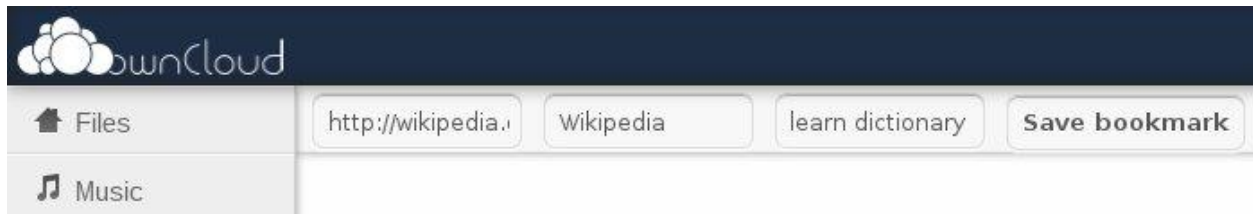
USING THE BOOKMARKS APP

If you want to add a bookmark to the Bookmarks application, you can either use the main interface or the bookmarklet.

5.1 The main interface

5.1.1 Add a bookmark

The main ownCloud interface contains 3 fields at the top where you can enter the website address (or URL), the title of your bookmark and a set of tags separated from each other by a space.



In this example, we have added the page : <http://wikipedia.org> with the title “Wikipedia” and some tags describing what wikipedia is (for an easier search later on).

5.1.2 Edit/delete a bookmark

You also have the possibility to edit or delete your bookmark. For that, just hover on the bookmark and click on the little pencil if you wish to edit the bookmark or on the cross if you want to delete it.

The bookmark will then be filled into the 3 fields at the top of the screen. Modify your bookmark to your need then hit the save button to persist the change.

5.1.3 Search

If you click on a tag, ownCloud will only display the bookmarks that are described with this tag.

You can also use the search bar of owncloud in the top right of your screen.

Simply click on the “Bookmarks” menu in the sidebar to come back to the default view.

5.2 The bookmarklet



The creator of this app understand that people won't come, open the ownCloud page to add the bookmark when the see a cool site. This is why they have made this cool "bookmarklet".

A bookmarklet is small button that you can drag and drop in your bookmarks. The next time you see a cool new site, press on this special bookmark, it will add the site to your ownCloud bookmarks.

To find this bookmark go to your personnal preference and search for the "Bookmarklet" item.

NATIVE MEDIA PLAYER SUPPORT



You can access your music stored in ownCloud with every Ampache-compatible media player. You can find the URL for your specific ownCloud installation in your personal settings, or replace ADDRESS with the URL of your ownCloud installation yourself.

Ampache-URL: `http://ADDRESS/remote.php/ampache/`

Ampache-compatible players that work with ownCloud include:

- [amaroK](#), standard KDE music player
- [tomahawk](#), cross platform player
- [justplayer](#), music player for android

You can find more information about Ampache and other players at the [Ampache wikipedia article](#)

The current maintainer of the Media Player is Robin Appelman.

USER ACCOUNT MIGRATION

User account migration support is provided by the `user_migrate` app. It is important to note that only data from apps that support migration will be migrated. While we encourage all apps to support migration, it is not a requirement and it is the responsibility of the app developer.

7.1 Export

To export your user account, simply visit Settings > Personal and click on the 'Export' button. A compressed zip file will be generated on the fly and downloaded to your computer. This file includes all of your files and application data that was stored on your ownCloud account. You may use this as a method of backing up your personal account.

7.2 Import

To import your user account, you must first have an existing account on your new ownCloud install. Then follow this procedure:

1. Login to your new account on the new ownCloud instance
2. Navigate to the Settings > Personal page
3. Select the 'Import' button, and locate the zip file that you downloaded from your old ownCloud instance
4. Wait for the file to be uploaded and imported

Note: Your user account credentials will **not** be migrated.

INDICES AND TABLES

- *genindex*